

EMERGENCY RELIEF | PREPAREDNESS | REHABILITATION



TOGETHER, WE WILL REPAIR

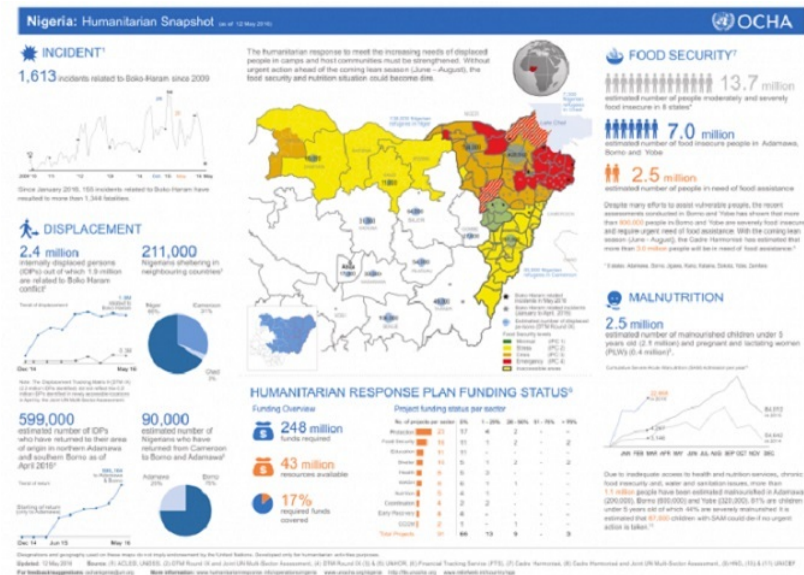
Dear Friend,

Now, more than ever, we need greater support for the displaced whose lives have been wrecked by violence. For example, *Amina, from Borno, was held captive and sexually abused by Boko Haram terrorists in 2015. She has since regained her freedom but has been diagnosed with HIV and needs food and support to access medical care.

Help Sesor make this happen for her and many others by donating to our:
StanbicBTC-0002888203 or **GTB-0170089727**

Your support helps us help more people affected by the worsening displacement crisis.

The diagram below shows, among other things, how displacement in Nigeria is affecting adults and children – beyond the obvious issues of finding safe shelter for displaced persons, there are other issues to deal with such as ensuring they do not starve (food security) and that those affected, especially children and pregnant women are not malnourished. Those suffering the physical and mental effects of violence have to also be attended to. More on this later.



The UN Office for the Coordination of Humanitarian Affairs (May 12, 2016)

The infographic above, when compared with figures from the International Organization for Migration (IOM) and NEMA's Displacement Tracking Matrix also confirms that the numbers of those displaced increased from 2.1 million in December 2015 to 2.4 million in May 2016 (OCHA) in 207 Local Government Areas (LGA) covering 13 States in Nigeria.

The overall figure does not capture displaced persons who fled to Lagos and other Southern cities, as well as persons displaced in recent months by activities of herdsmen in other communities in Anambra and Enugu states.

With more attacks reported in communities such as Tari village, Binnev Ward, Buruku Local Government Area of Benue State by suspected Fulani herdsmen that left no fewer than five persons dead several others injured and saw hundreds of people fleeing the area (Daily Post Nigeria, May 15, 2016), it is apparent that Nigeria faces an unprecedented displacement crisis as does the rest of the world.

Hollywood actress and UNHCR Ambassador, Angelina Jolie Pitt, speaking at the BBC's **World on the Move** Day (a day to examine how mass migration is changing the world) said:

“The number of conflicts and scale of displacement has grown so large. This tells us something deeply worrying about the peace and security of the world...The average time a person will be displaced is now nearly 20 years.”
(BBC News, <http://www.bbc.com/news/uk-36300094>)

To keep supporting our work with displaced persons, simply:

Make donations into our **StanbicBTC-0002888203** or **GTB-0170089727**

Make donations **via <http://www.sesorafrica.org/i-would-like-to-donate/>**

Share this newsletter with friends

©2016 Sesor Africa | Capital Square, 2nd Floor, The Garnet, Km 14, Lekki-Epe
Expressway, Igbo-Efon, Lekki, Lagos, Nigeria

[Web Version](#)

[Forward](#)

[Unsubscribe](#)

Powered by [Mad Mimi®](#)

A GoDaddy® company